



REV.	ECN NO.	REVISED	DATE

OTE:

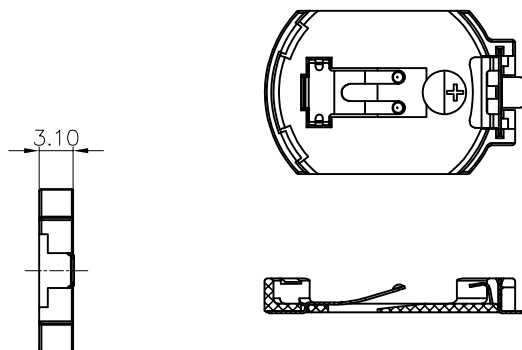
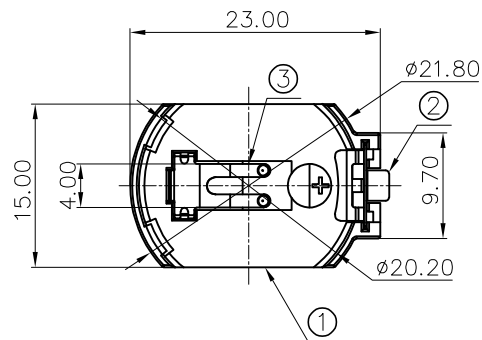
1.MATERIAL:

- a.HOUSING:LCP WHITE
- b.CONTACT:PHOSPHOR BRONZE
(SURFACE PLATING: Au 1u")

SEE ORDERING INFORMATION

2.ELECTRIC:

- a.CONTACT RESISTANCE: 30 MILLIOHMS MAX
- b.INSULATION RESISTANCE: 100 MEGA OHMS MIN
- c.DIELECTNIC VOLTAGE: 500V AC ONE MINUTE
- d.OPERATING TEMPERATURE: -25° C~ +85° C



ORDERING INFORMATION
BS-2016-B4AA003

电池座

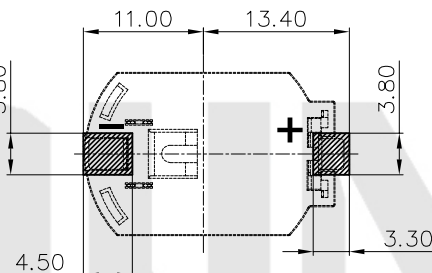
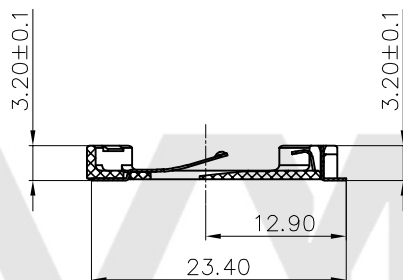
电池型号

SMT 180° TYPE

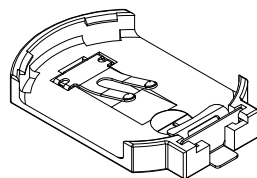
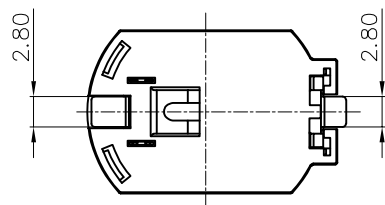
PLATING:
A-Au1U"
J-Ni100U"~120U"
K-Sn100U"~120U"

MATERIAL:
1A-PBT BLACK
1B-PA66 BLACK
2A-PPA BROWN
2B-PPA BLACK
3A-PPS BROWN
3B-PPS BLACK
4A-LCP WHITE
4B-LCP BLACK
5A-PA9T BLACK

工程部
2023-12-02
LQ. HUANG



PCB Layout Diagram
Bottom View



UNLESS OTHERWISE SPECIFIED TOLERANCES		MYOUNG 美阳 www.meiyangdz.com	
DECIMALS: X :±0.30 X.X :±0.25 X.XX :±0.20 X.XXX :±0.10	ANGLES: X :±1° X.X :±0.5°	DSND YangFeng	DATE 2013-12-02
WEIGHT:		CHKD ZhouRuicai	DATE 2013-12-02
SHEET 1 OF 1		APVD XueShunyong	DATE 2013-12-02
SCALE:		SIZE: A4	VIEW:
UNIT: mm		REV.: A/0	OBJECT: MY
TITLE:		BS-2016-8-2 Au SMT	
PART NO.:		BS-2016-B4AA003	
DRAW NO.:		MY-CP-0266	

NO.	PART NAME	Q'TY	MATERIAL	PLATING & COLOR
3	TERMINAL-	1	PHOSPHOR BRONZE, T=0.2mm	Au-Plating
2	TERMINAL+	1	PHOSPHOR BRONZE, T=0.2mm	Au-Plating
1	HOUSING	1	LCP	WHITE