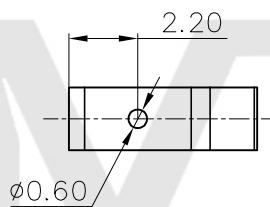
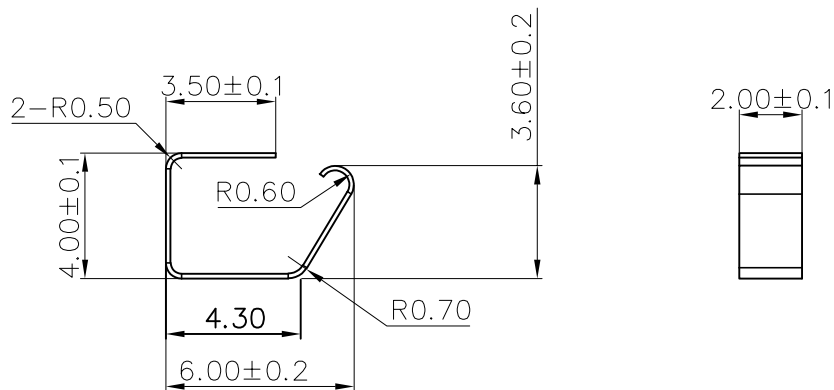




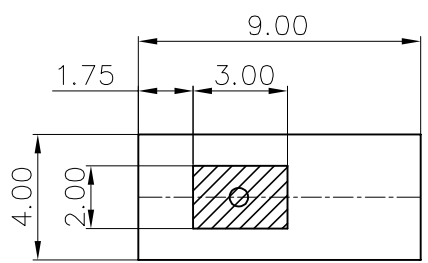
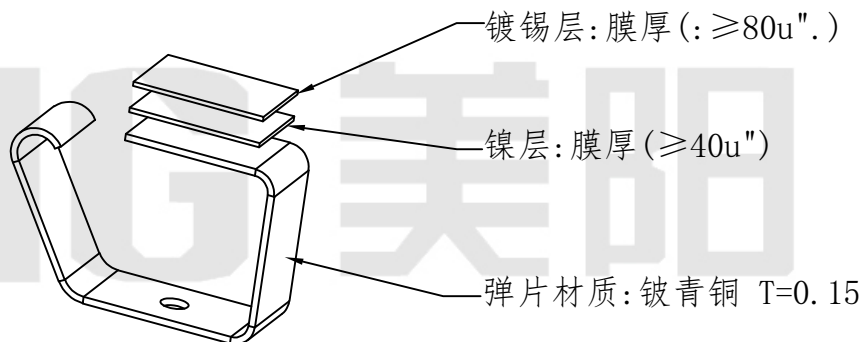
REV.	ECN NO.	REVISED	DATE

技术要求:

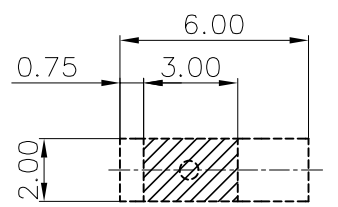
- 1、冲裁毛刺高度 $\leq 0.03\text{mm}$ ;
- 2、制件表面必须电镀，表面光洁无脏物、油污等其它方面的缺陷;
- 3、电镀镀种：高温镍锡，镀层膜厚：镍层： $\geq 40\mu$ "  
锡层： $\geq 80\mu$ "min.;
- 4、盐雾测试要求：时长为24h;
- 5、硫化钾测试：硫化钾浓度为3%，浸测时间：5分钟  
测后表面要求：制件表面无变色、氧体弱、锈蚀、变黑各其它不良现象。



工程部  
2022-02-19  
LQ. HUANG



PCB LAYOUT RECOMMEND



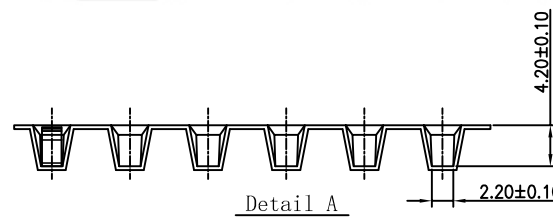
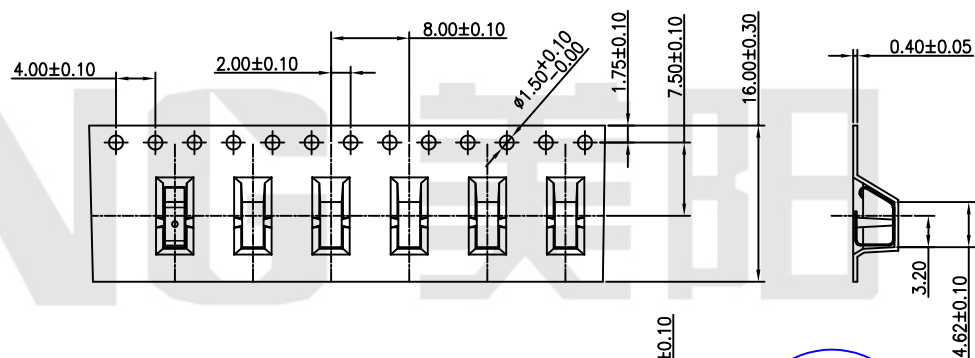
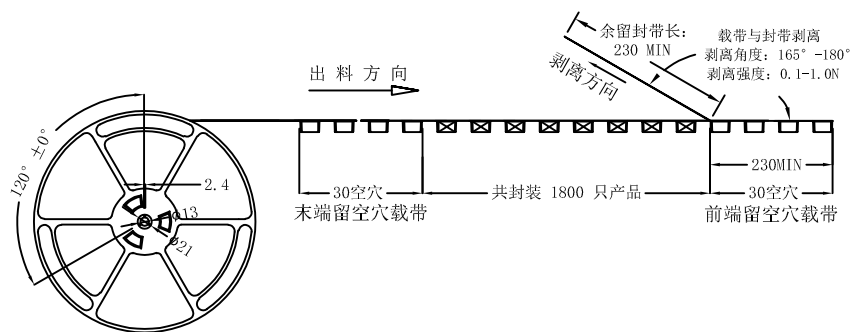
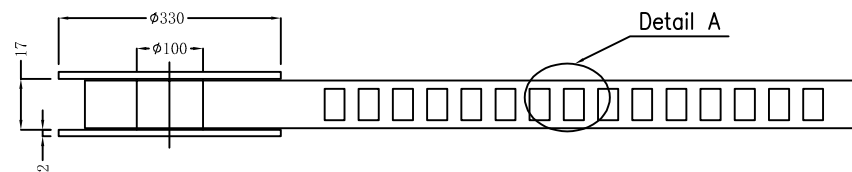
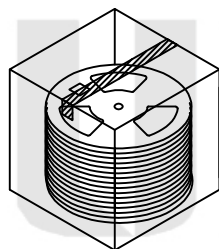
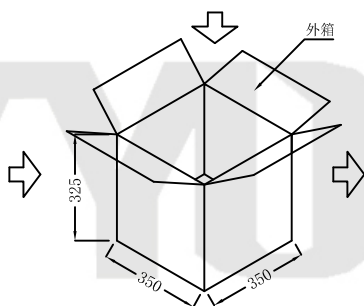
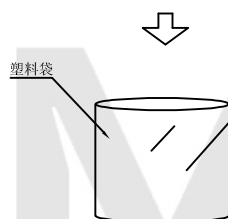
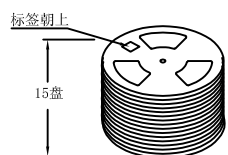
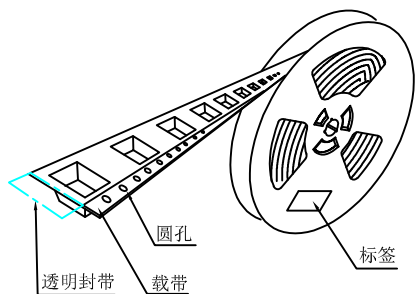
SOLDER PAD DIMENSION

UNLESS OTHERWISE SPECIFIED TOLERANCES		<b>MYOUNG 美阳</b> <a href="http://www.meiyangdz.com">www.meiyangdz.com</a>			
DECIMALS: X :±0.30 X.X :±0.25 X.XX :±0.20 X.XXX :±0.10	ANGLES: X :±1° X.X :±0.5°	DSND	YangFeng	DATE	2022-02-19
WEIGHT:		CHKD	ZhouRuicai	DATE	2022-02-19
SHEET 1 OF 1		APVD	XueShunyong	DATE	2022-02-19
NO.		SCALE:	SIZE: A4	VIEW:	⊕ ↺
PART NAME		UNIT: mm	REV.: A/0	OBJECT: MY	
Q'TY		TITLE: 电池接触片SMD-F001 高温镍锡 SMT		PART NO.: MY-SMD-F001	
MATERIAL		DRAW NO.:MY-CP-0271			
PLATING & COLOR					

1	SMD-F001	1	BeCu T=0.15MM	NiSn (hight hot)-Plating
NO.	PART NAME	Q'TY	MATERIAL	PLATING & COLOR



产品



技术要求:

1. 圆孔十个孔距离累计允许公差为 $\pm 0.2\text{mm}$
2. 带长250mm内容许弯曲度1mm
3. 材料厚度以在载带边缘测量为准
4. 所有尺寸定义依循EIA-481-C系准则定义之
5. 材料: 黑色PS T=0.30 $\pm$ 0.05mm
6. 所有卷轮为灰蓝挖空旋转塑胶卷轮
7. 整模成型长度: 14.88M,
8. 非指明公差范围为:  $\pm 0.1\text{mm}$ ; 超过250mm不计算累计误差
9. 型腔外形凡未标明处倒角R为0.2-0.3; 拔模斜度未标注的为 $3^{\circ}$ 以下

包装信息:

- 1、每卷盘装产品 1800 只, 卷盘外侧贴相关标签;
- 2、每 15 卷盘放在一个塑料袋中;
- 3、每外箱装15盘, 产品总数: 27000 只;
- 4、外箱上下用胶纸封成“工”字;
- 5、净重: XX KG, 毛重: XX KG.

UNLESS OTHERWISE SPECIFIED TOLERANCES		<b>MYOUNG 美阳</b> www.meiyangdz.com			
DECIMALS:	ANGLES:	DSND	YangFeng	DATE	2021-09-04
X : ±***	X : ±***	CHKD	ZhouRuicai	DATE	2021-09-04
X.X : ±***	X.X : ±***	APVD	XueShun Yong	DATE	2021-09-04
X.XX : ±***	X.XX : ±***	WEIGHT:	SCALE:	SIZE:	A4
X.XXX : ±***	X.XXX : ±***			VIEW:	
		SHEET 1 OF 1	UNIT: mm	REV.:	A/0
				OBJECT:	MY
					TITLE:
					电池接触片 SMD-F001 卷装
					PART NO.:
					MY-SMD-F001-R
					DRAW NO.:MY-BD-0049